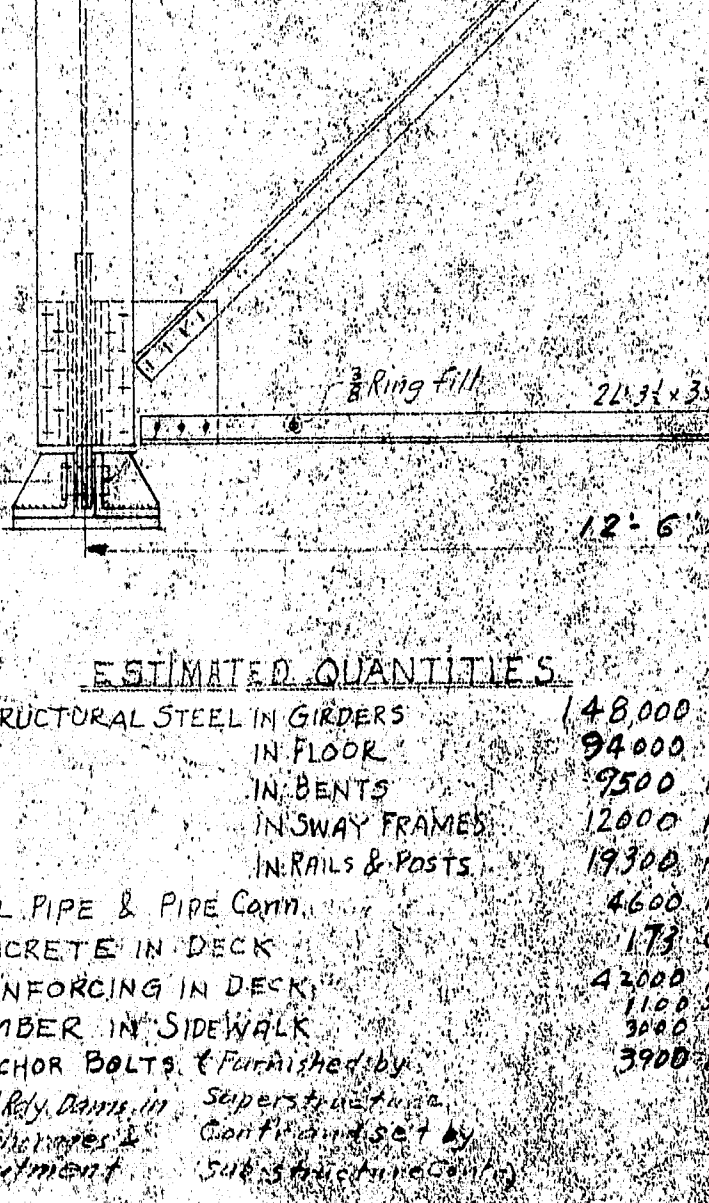
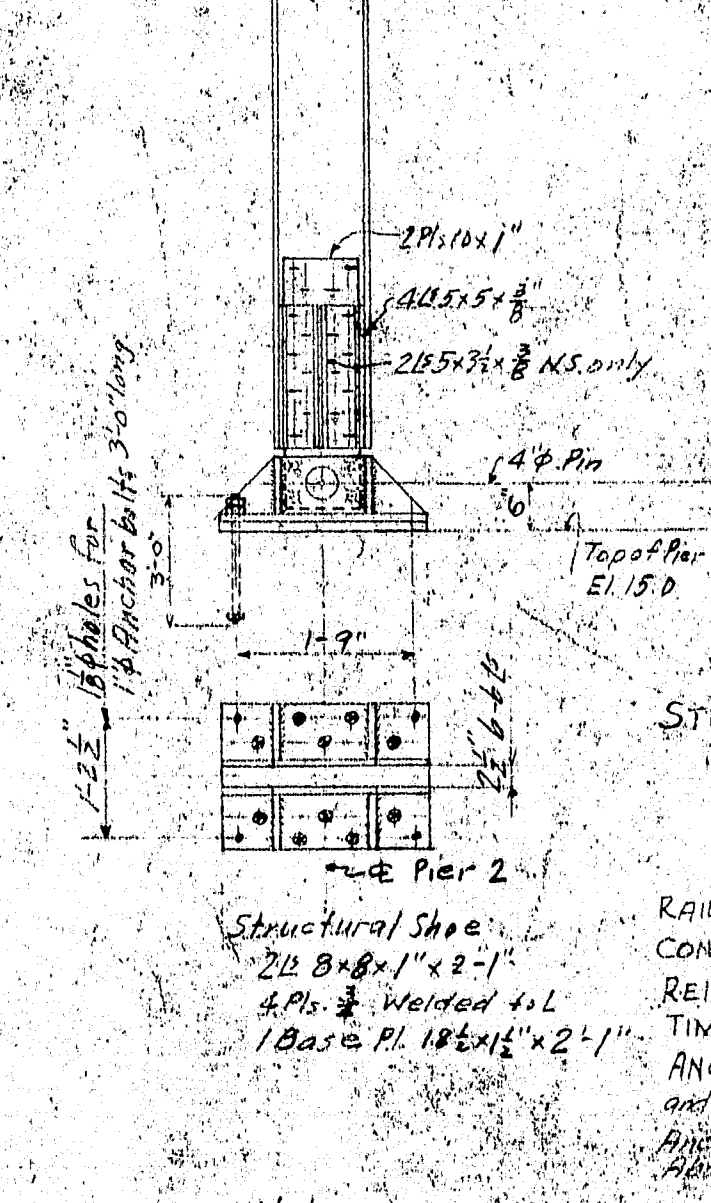
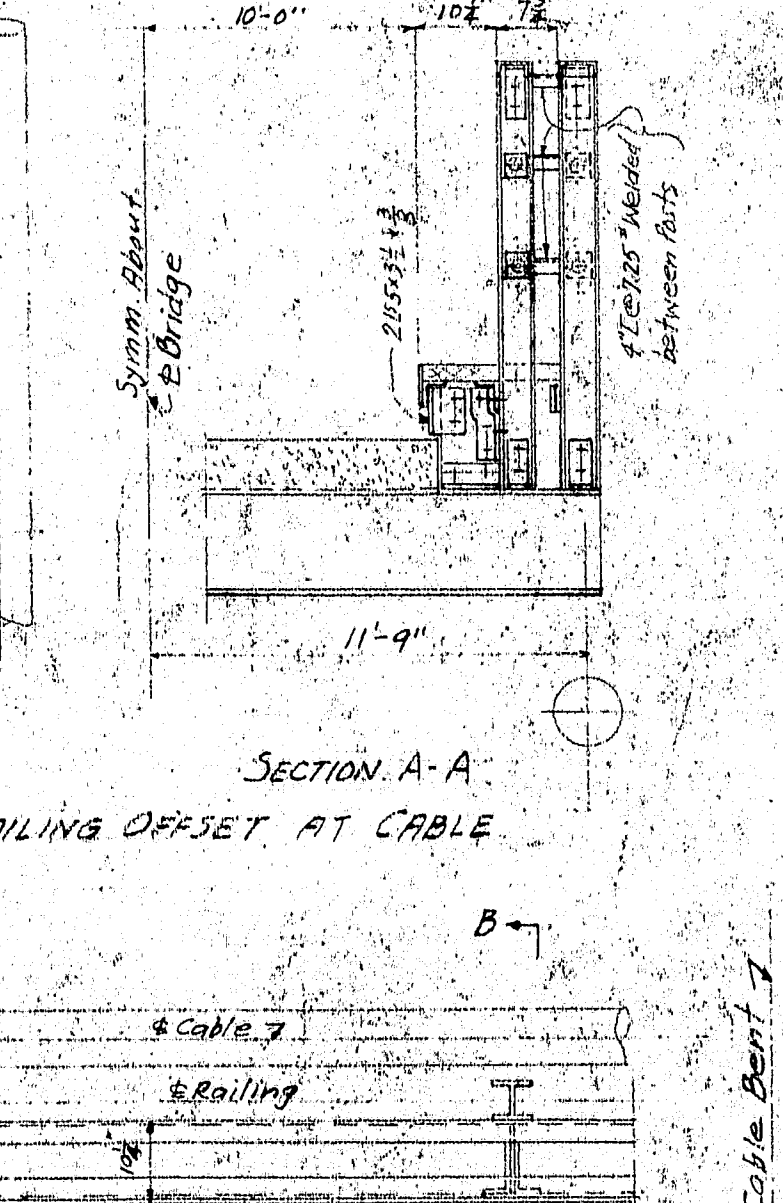
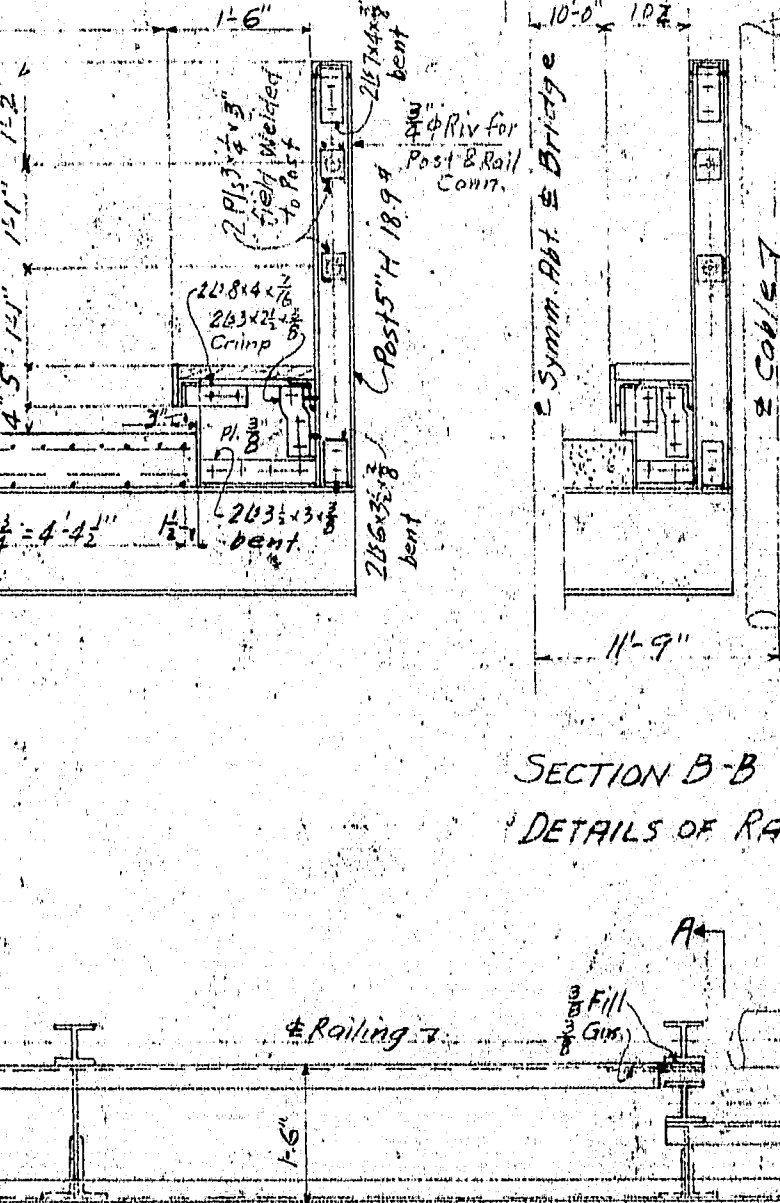
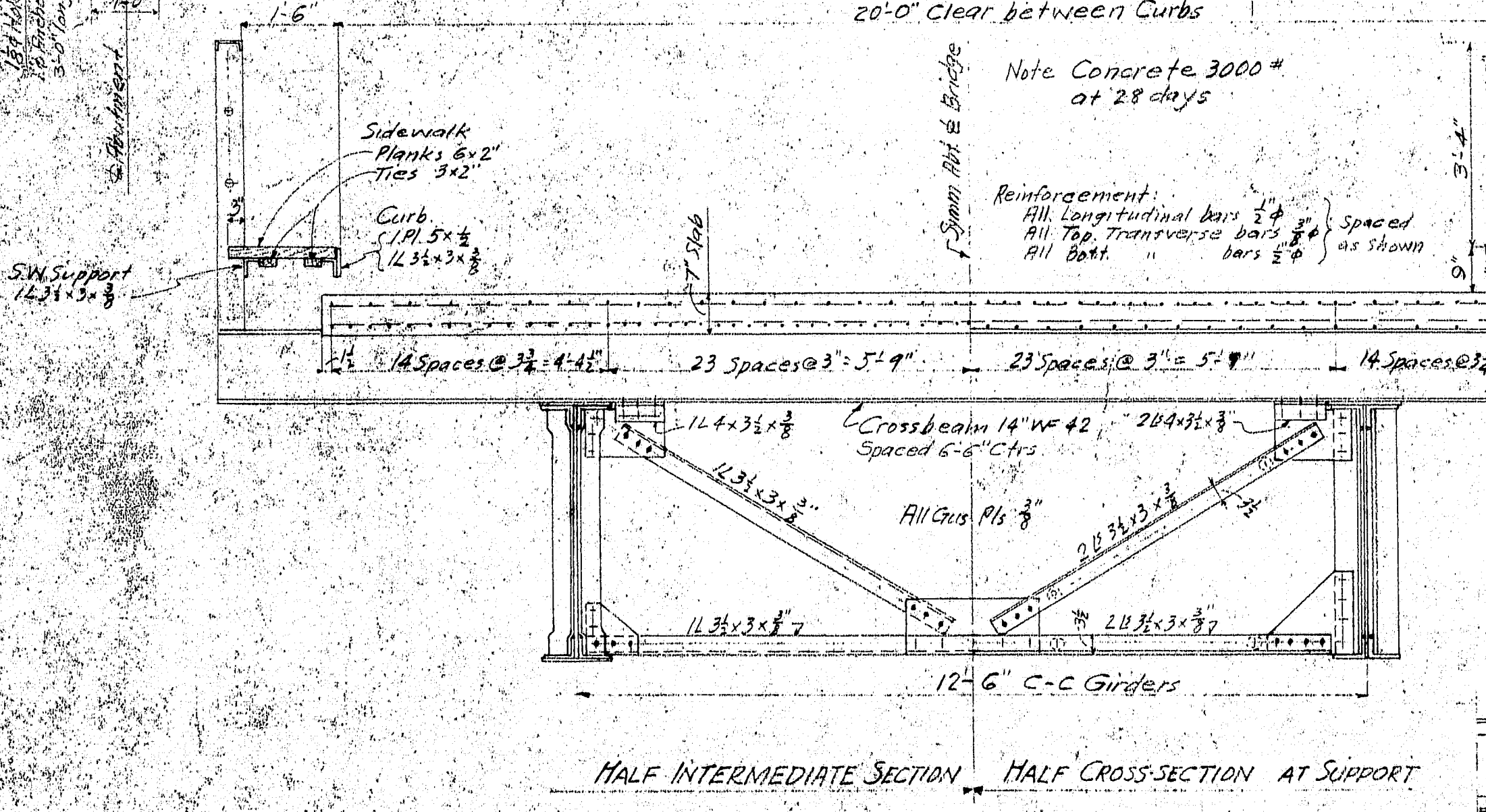
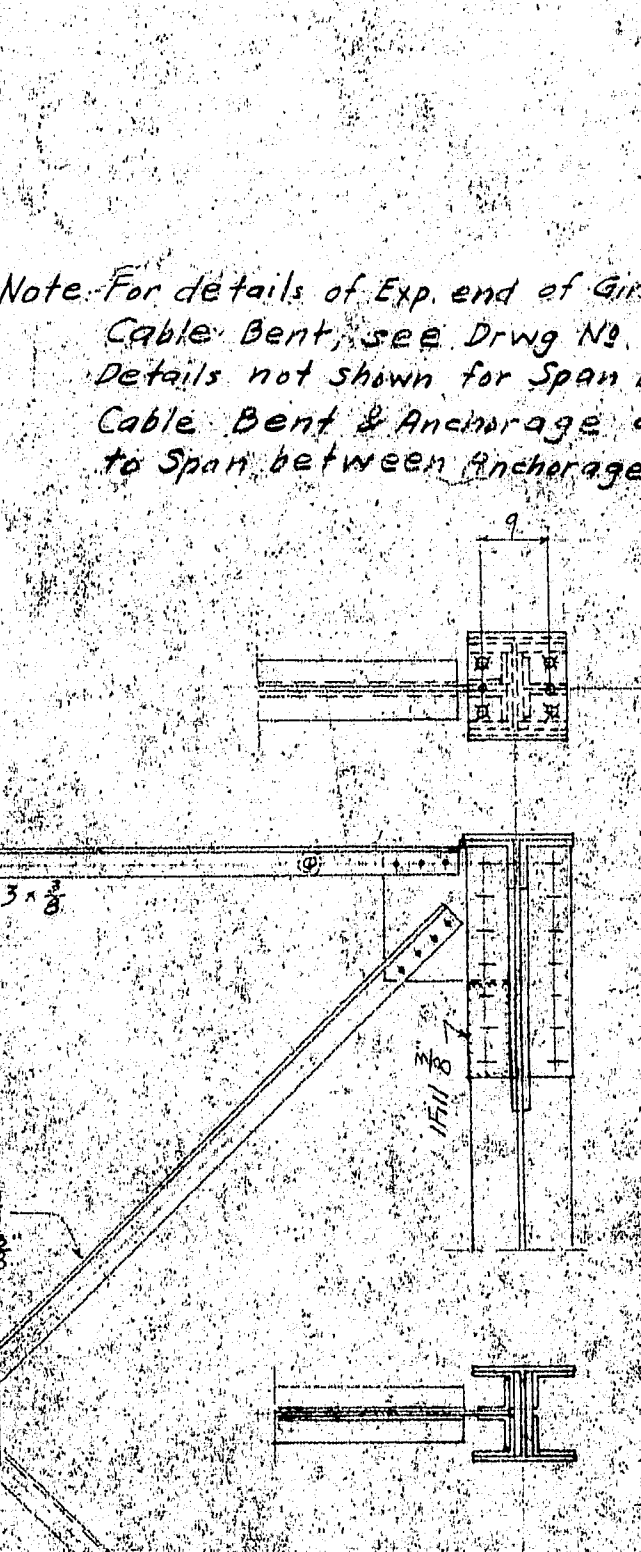
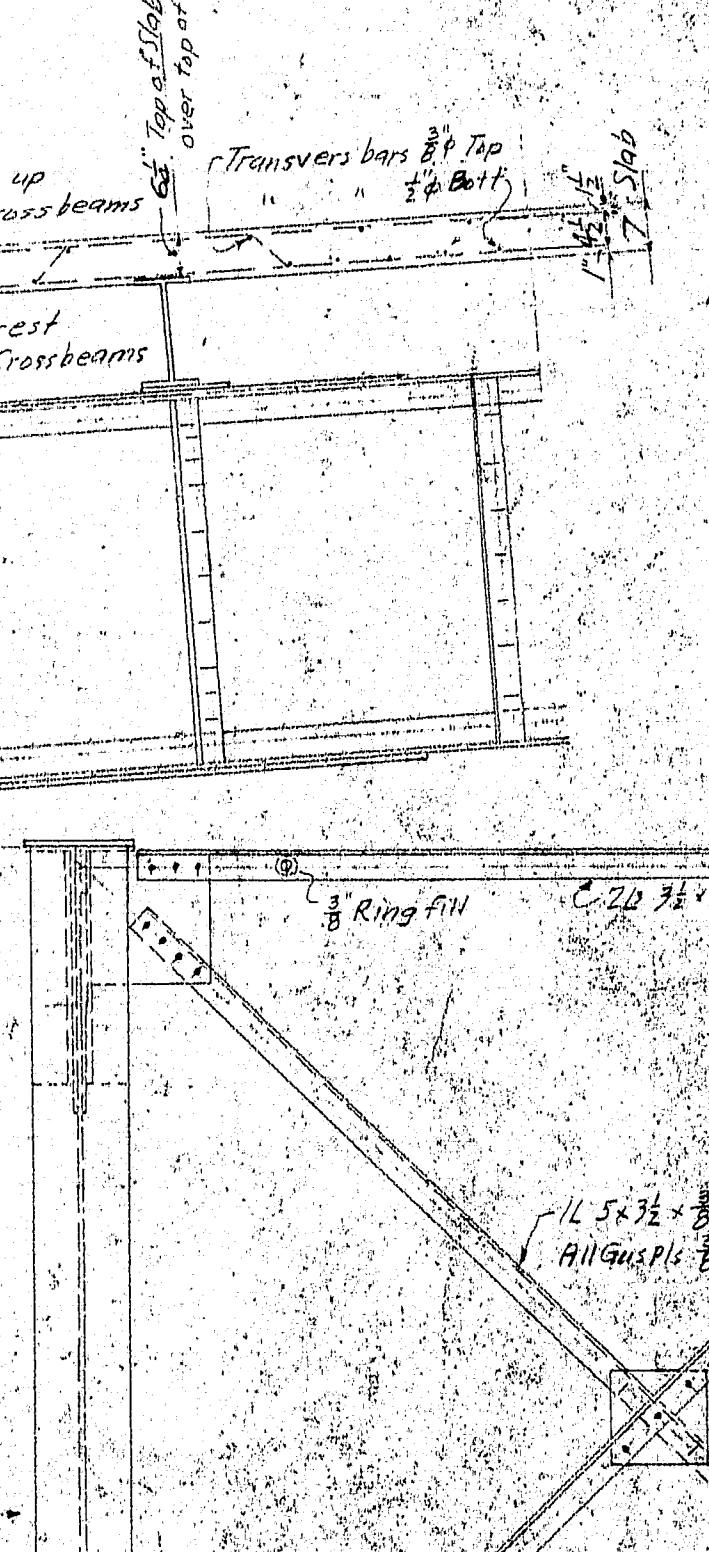
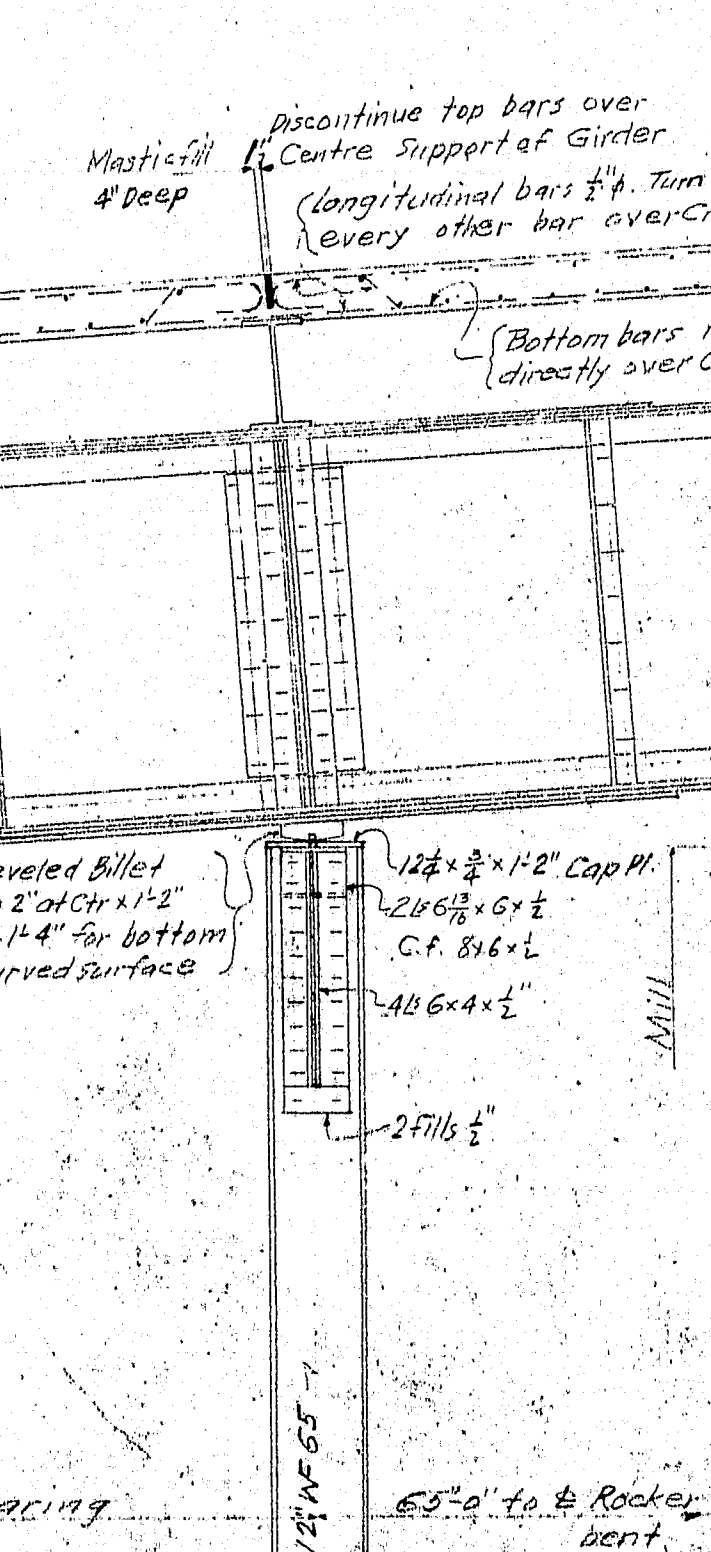
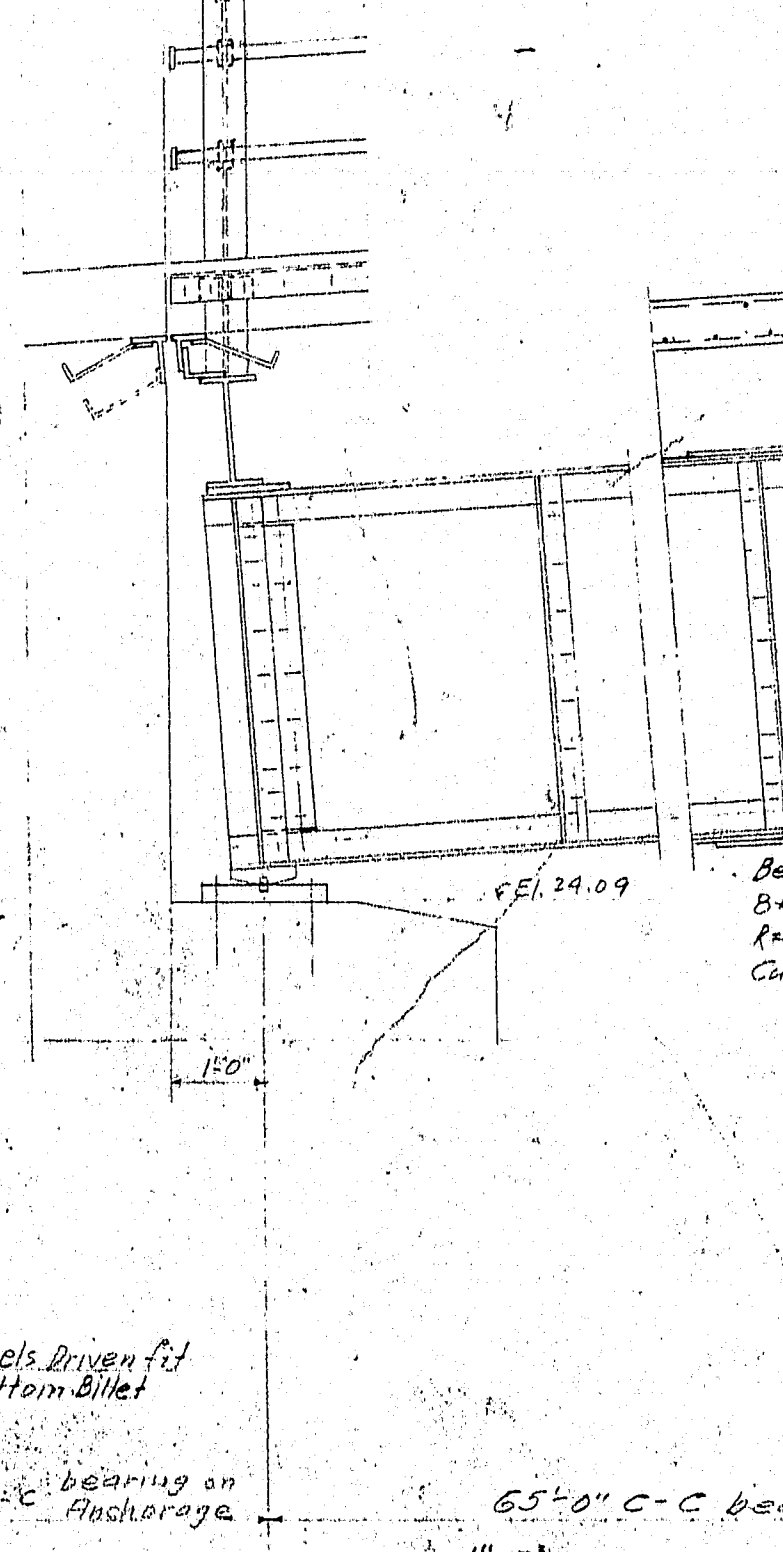
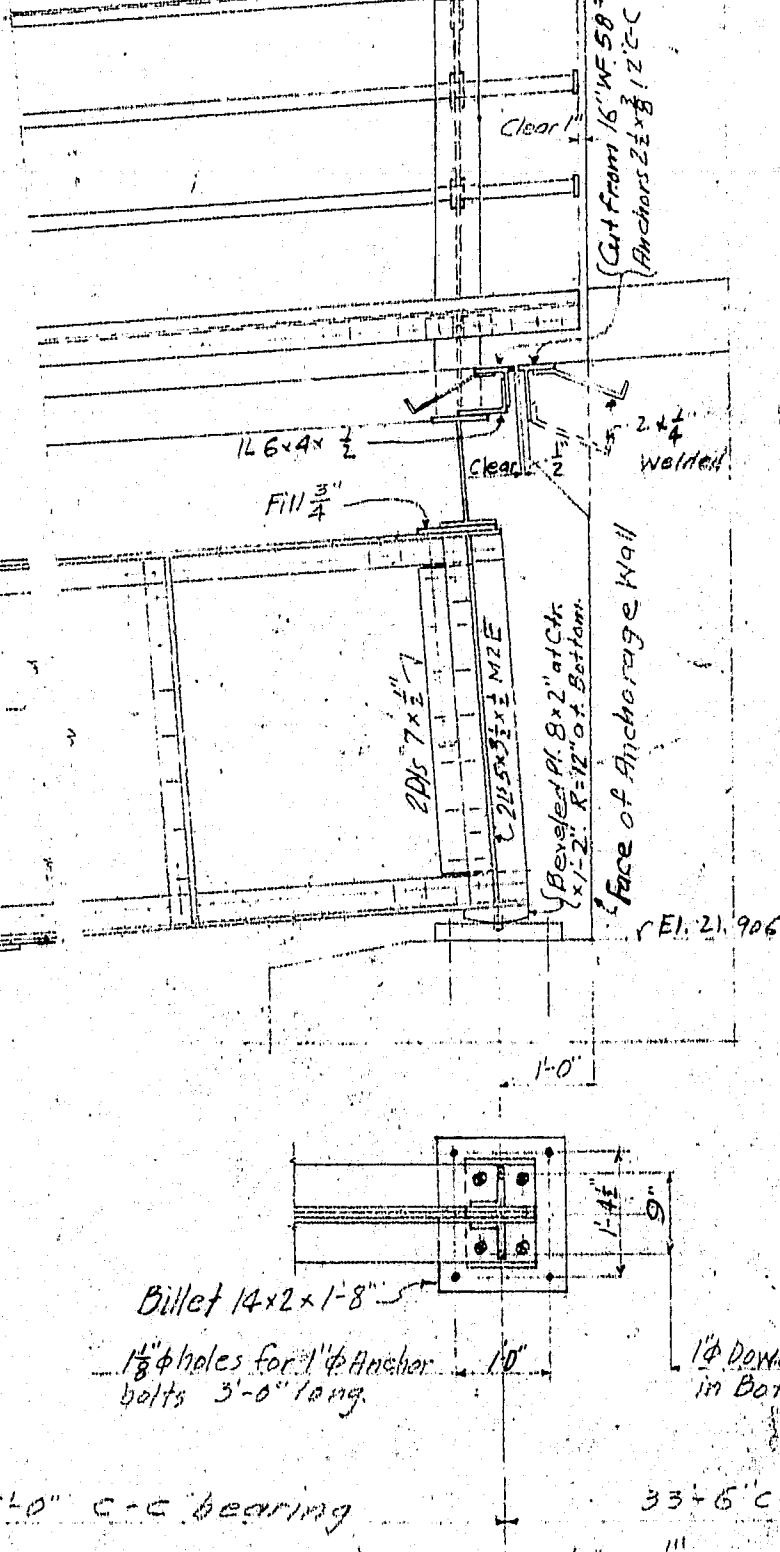
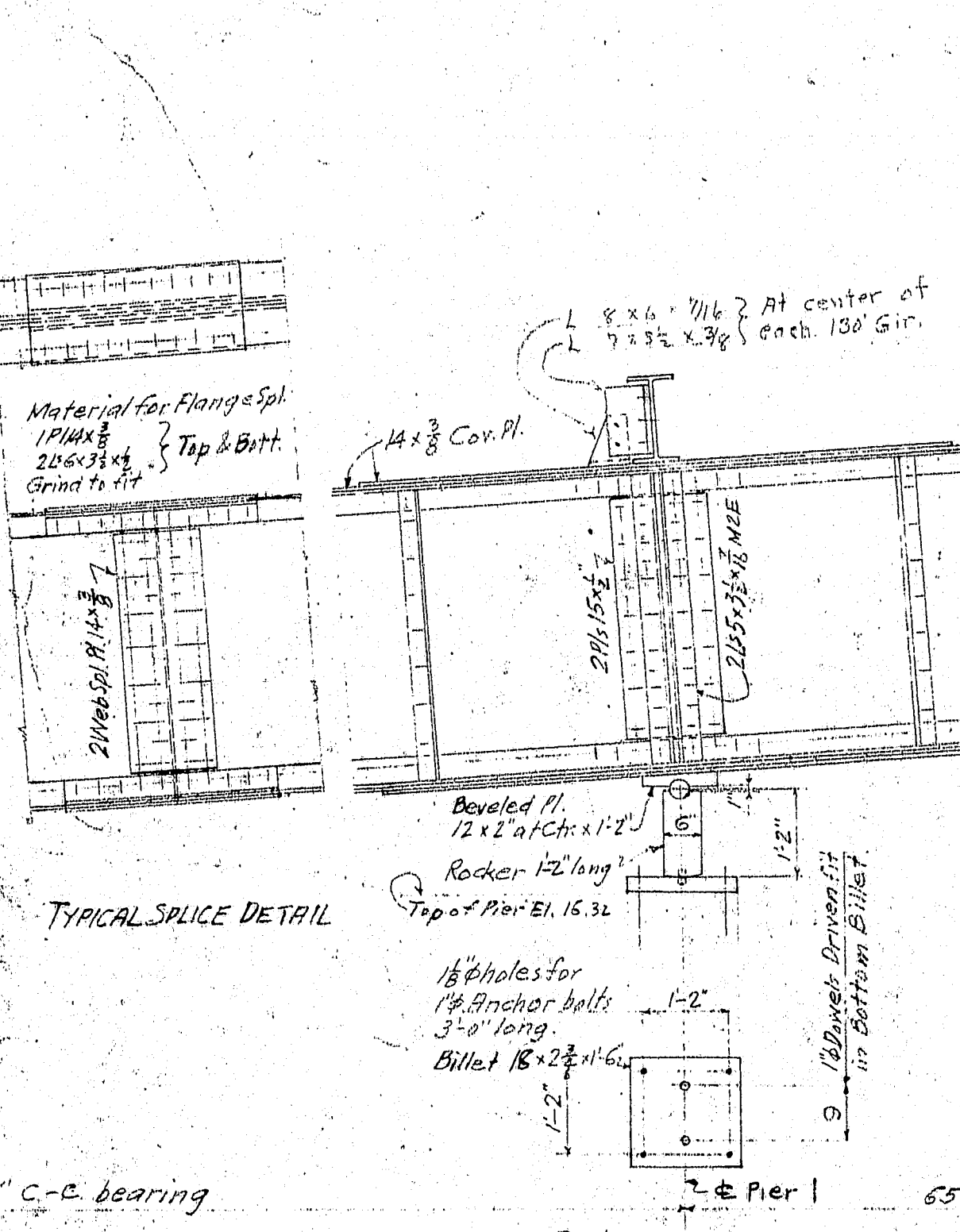
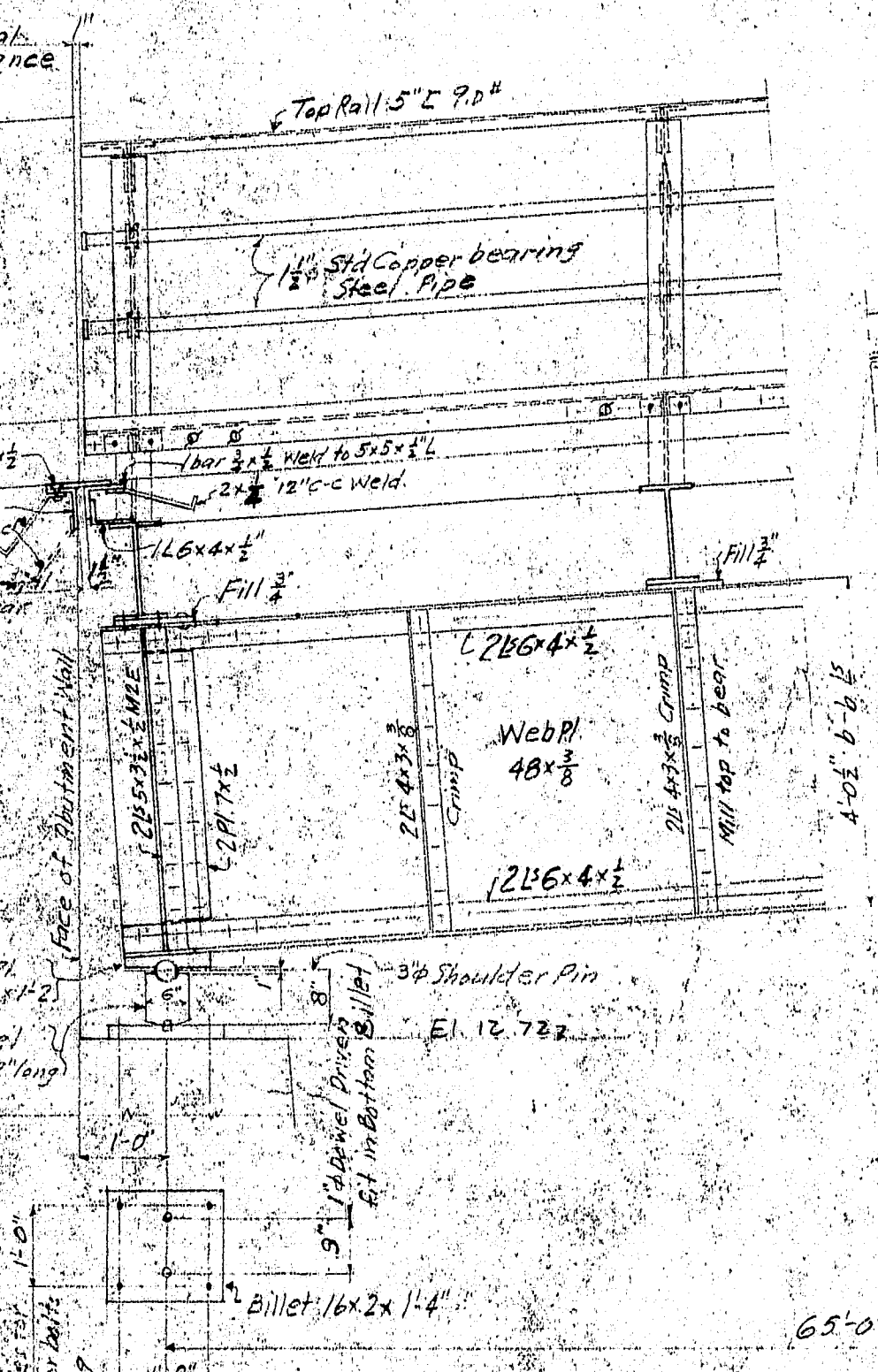
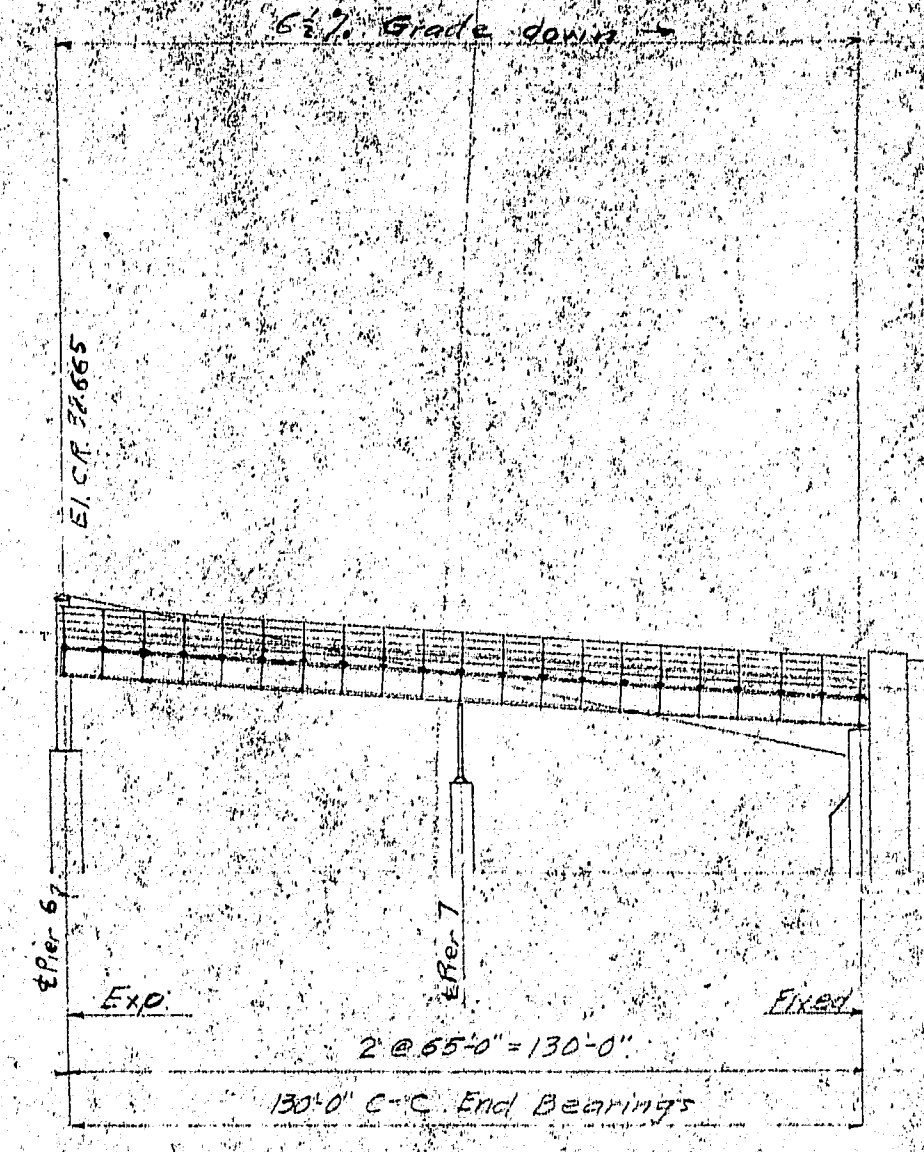
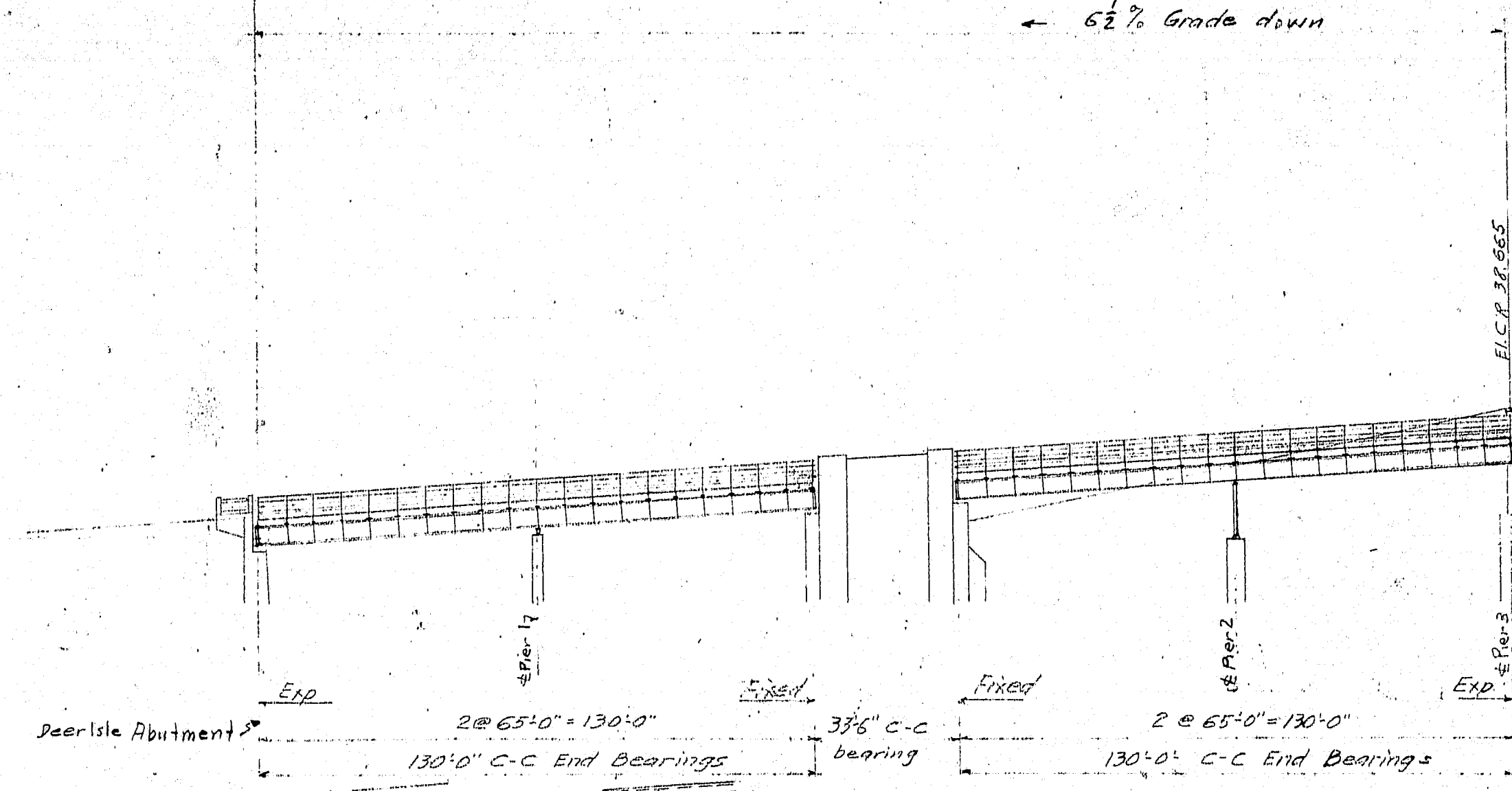


STRESSES & SECTIONS OF VIADUCT GIRDER			
DL	LL + I	Total	Area Reqd
387 K	550	937 K	13.4"
387 K	550	937 K	13.4"
387 K	550	937 K	13.4"
387 K	550	937 K	13.4"
387 K	550	937 K	13.4"
387 K	550	937 K	13.4"
387 K	550	937 K	13.4"
387 K	550	937 K	13.4"
387 K	550	937 K	13.4"
387 K	550	937 K	13.4"

CROSS BEAMS		
DL	LL + I	Total
27 K	623	650 K
27 K	623	650 K
27 K	623	650 K
27 K	623	650 K
27 K	623	650 K
27 K	623	650 K
27 K	623	650 K
27 K	623	650 K
27 K	623	650 K
27 K	623	650 K



Note: For details of Exp. end of girder at Cable Bent, see Drawing No. 5104. Details not shown for Span between Cable Bent & Anchorage are similar to Span between Anchorage & Abutment.

ESTIMATED QUANTITIES	
STRUCTURAL STEEL IN GIRDERS	148,000 lbs.
IN FLOOR	94,000 lbs.
IN BENTS	9,500 lbs.
IN SWAY FRAMES	12,000 lbs.
IN RAILS & POSTS	19,300 lbs.
RAIL PIPE & PIPE CORR.	4,600 lbs.
CONCRETE IN DECK	178 cu yd.
REINFORCING IN DECK	42,000 lbs.
TIMBER IN SIDEWALK	11,000 lbs.
ANCHOR BOLTS FURNISHED BY CONTRACTOR	3,000 lbs.

P.W.A. PROJECT NO. ME-1010D
DEER ISLE SEDGWICK BRIDGE DISTRICT
BRIDGE OVER EGGEMOGGIN REACH
FROM LITTLE DEER ISLE TO SEDGWICK
HANCOCK COUNTY, MAINE
VIADUCT LAYOUT
CROSS SECTIONS & DETAILS
ROBINSON AND STEINMAN
ENGINEERS
NEW YORK CITY
SCALE 3/4" = 1'-0"
DRAWING NUMBER
RS 3310-510
SEPTEMBER 5, 1935

